

CENTRIFUGAL EXTRACTOR

GIANT2



GRUPPO

PIERALISI

CENTRIFUGAL EXTRACTOR GIANT2

Our GIANT 2 centrifugal extractor is equipped with:

- special device to regulate the liquid ring inside the bowl
- platform and cylindric bowl housing made in carbon steel
- patented sludge scraper for continuous discharge of dewatered sludge from the solids discharge chamber
- special wear-proof protection on peripheral screw area

- electronic safety device for overload protection, with optional visual or acoustic alarm signals
- hard-metal protection bushes on solids discharge holes
- electronic revolution counter as standard equipment

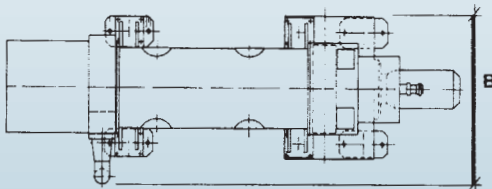
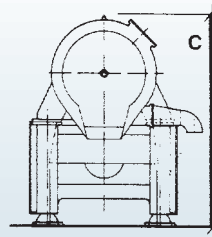
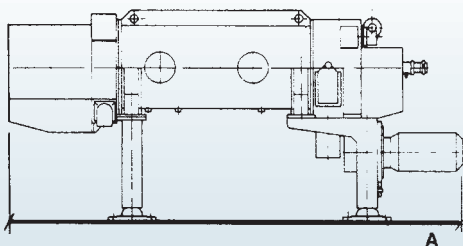
- standard device for continuous modifications of the revolution speed of the internal screw.

ALL PARTS IN CONTACT WITH PRODUCT IN STAINLESS STEEL



GIANT2

Model	Main motor power kW	Rotovariator power kW	Drum revolution max rpm	Centrifugal force max x g	Slenderness ratio L/D	Drum diameter mm	Hydraulic capacity l/h	Weight kg
GIANT2	75 ÷ 110	22 ÷ 38	2,000	1,570	3.59	700	110,000	9,800



Model	Total length A mm	Total width B mm	Total height C mm
GIANT2	5,200	2,200*	2,200

*3250 mm with stabilizers

The company reserves the right to modify the features of its products without notice. Registered trademarks. Advertising material © copyright. All rights reserved.

GRUPPO

PIERALISI

Via Don Battistoni, 1 - 60035 JESI (AN) - Italy - Tel. +39-0731-231.1 - Fax +39-0731-231.239
www.pieralisi.com - info@pieralisi.com