

INDUSTRIAL DIVISION

CENTRIFUGAL EXTRACTORS

600 SERIES



GRUPPO

**PIERALISI**

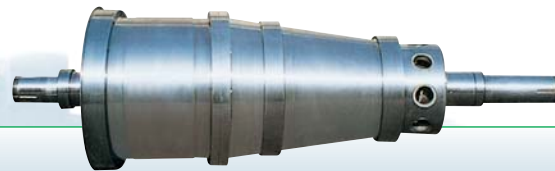
## CENTRIFUGAL EXTRACTORS 600 SERIES

*Our 600 series centrifugal extractors are equipped with:*

- special device to regulate the liquid ring inside the bowl
- platform and cylindric bowl housing made in carbon steel
- patented sludge scraper for continuous discharge of dewatered sludge from the solids discharge chamber
- special wear-proof protection on peripheral screw area
- electronic safety device for overload protection, with optional visual or acoustic alarm signals
- hard-metal protection bushes on solids discharge holes
- electronic revolution counter, as standard equipment

- optional device for continuous modifications of the revolution speed of the internal screw.

**ALL PARTS IN CONTACT WITH PRODUCT IN STAINLESS STEEL**



**FP 600/M**

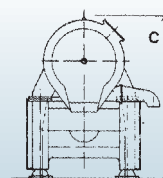
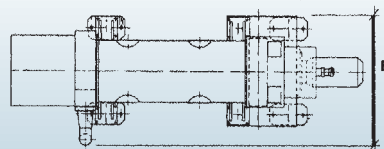
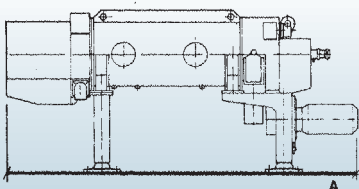


**FP 600 RS/M**



**FP 600 2RS/M**

Model	Main motor power kW	Drum revolution max rpm	Centrifugal force max x g	Slenderness ratio L/D	Drum diameter mm	Hydraulic capacity l/h
<b>FP 600/M</b>	11	4,100	3,300	2.62	353	6,000
<b>FP 600 RS/M</b>	11	4,100	3,300	3.48	353	9,000
<b>FP 600 2RS/M</b>	15	4,100	3,300	4.32	353	12,000



Model	Total length A mm	Total width B mm	Total height C mm
<b>FP 600/M</b>	2,250	1,050	1,400
<b>FP 600 RS/M</b>	2,550	1,050	1,400
<b>FP 600 2RS/M</b>	3,000	1,050	1,400

The company reserves the right to modify the features of its products without notice. Registered trademarks. Advertising material © copyright. All rights reserved.

GRUPPO  
**PIERALISI**

Via Don Battistoni, 1 - 60035 JESI (AN) - Italy - Tel. +39-0731-231.1 - Fax +39-0731-231.239  
www.pieralisi.com - info@pieralisi.com